



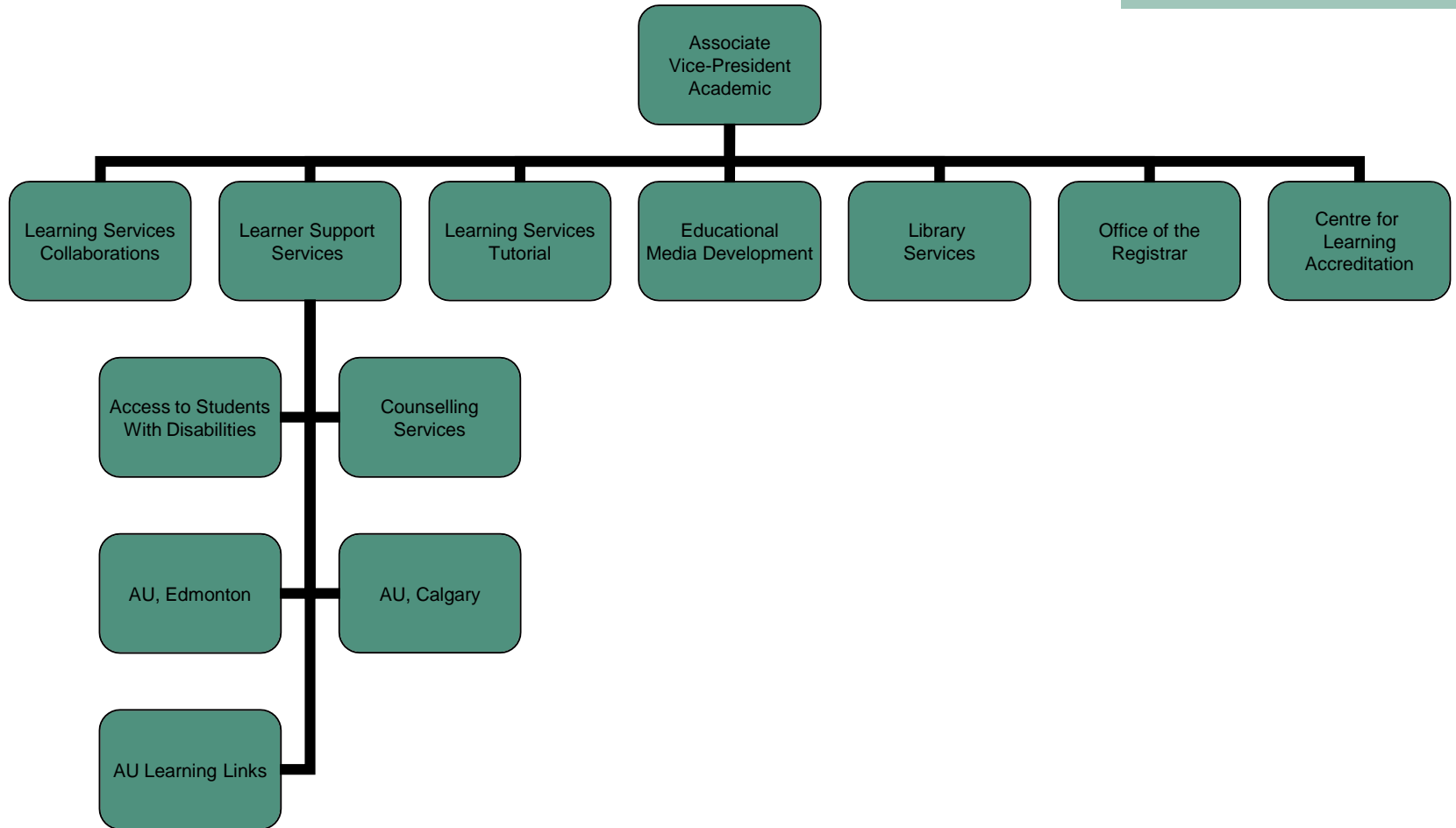
Learner Support Services

Athabasca University

Encouraging & Supporting Learners' Success



AVPA Organizational Chart



Services/support:

- Information
- Academic Advising
- Examination Services (AU Calg & AU Edm)
- Access for Students with Disabilities
- Counselling Services
- AU Learning Link

AU locations

- are primary points of contact and sources of information for anyone interested in the academic programs and services offered
- students can consult a variety of reference and learning materials, look at brochures about academic programs, and view a variety of information and self-help publications developed for adult learners

- Where:

Athabasca University, Athabasca
1 University Drive
Athabasca, AB T9S 3A3

Athabasca University, Edmonton North
2nd floor, 13220 St. Albert Trail
Edmonton, AB T5L 4W1

Athabasca University, Edmonton
Peace Hills Trust Tower
1200, 10011 – 109 Street
Edmonton, AB T5J 3S8

Athabasca University, Calgary
6th floor, South Campus
345 – 6 Avenue SE
Calgary, AB T2G 4V1

Information

- Information provided by:
 - AskAU (<http://www.athabascau.ca/contact/>)
 - Web, phone, email, fax, and in-person at all Athabasca University locations

Academic Advising

- Clarify degree regulations and interpret compliance reports (ie. student profile)
- Help learners choose the next course(s) for a program of study
- Provide information and guidance re: university regulations and procedures, applying for financial assistance, and other support services

Contact:

advising@athabascau.ca or 1.800.788.9041

*Also program specific advisors for undergraduate and graduate programs

Examination Services

- Requesting/scheduling:
 - Online exam request & scheduling system
 - Contact particular faculty
- Writing:
 - On-site at one of our AU locations
 - Examination invigilation network (across Canada)
 - Specific arrangements between student, exam invigilator, and Office of the Registrar

Access for Students with Disabilities

- Information
- Educational Advising & Counselling
- Assessment
- Development of an Individualized Education, Assistive Technology and Support Service Plan
- Funding Source support
- Academic and Learning Support
- Exam Accommodations
- Referral

Contact:

Access for Students with Disabilities

E-mail: asd@athabascau.ca

Web: <http://www.athabascau.ca/asd>

Phone: (780) 497-3424

Fax: (780) 421-2546

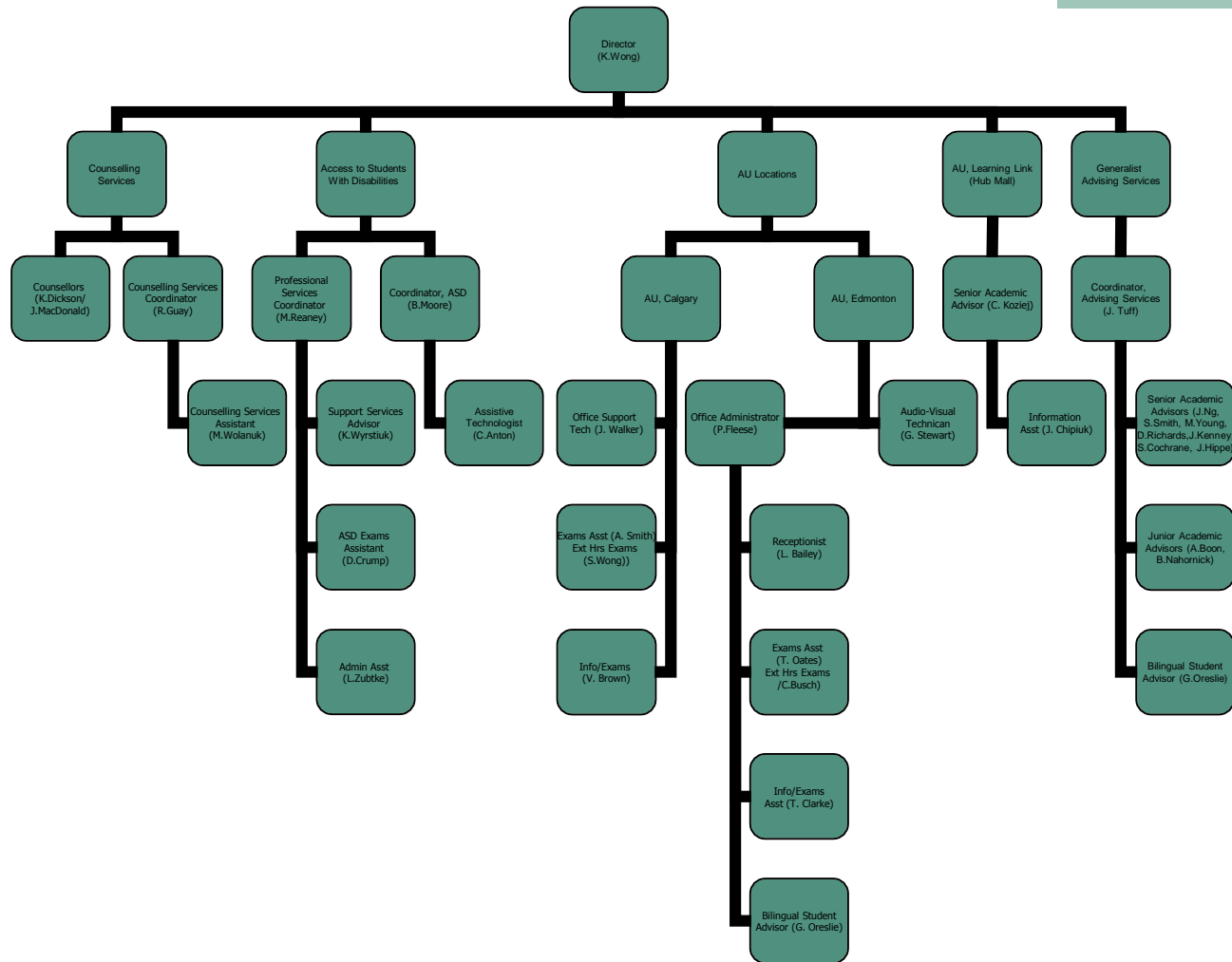
Counselling

- Education and Career Planning
 - help clarify your educational and career goals and the AU courses and programs to meet them
- Learning Support
- Balancing Student Life
- Referrals to Student LifeLine
- Contact:
 - counselling@athabascau.ca
 - (780) 675-6723
- Staff:
 - Rhonda Guay
 - Monica Wolanuk
 - Ken Dickson
 - Nikki Pawlitschek

AU Learning Link

- University of Alberta - opened February, 2007
 - 9109N – 112 Street (HUB Mall)
 - Cindy Koziej, Senior Academic Advisor (780.421.5061)

Learner Support Services (LSS) Org Chart



Learner Support Services Team

(encouraging and supporting learners' success)

